

This document consists schematic diagram of SPD Box for Modbus Channel for 4 different cases:

- 1) TrackSo 4G Lite and Advance Combo with TR621 Converter
- 2) Wattmon Ultra with 2 Data SPD
- 3) Wattmon Ultra with TR621 Converter
- 4) WebdynSun with TR621 Converter

This will help you to start the journey of implementing proper protection ensuring reliable data communications at your solar power plants.

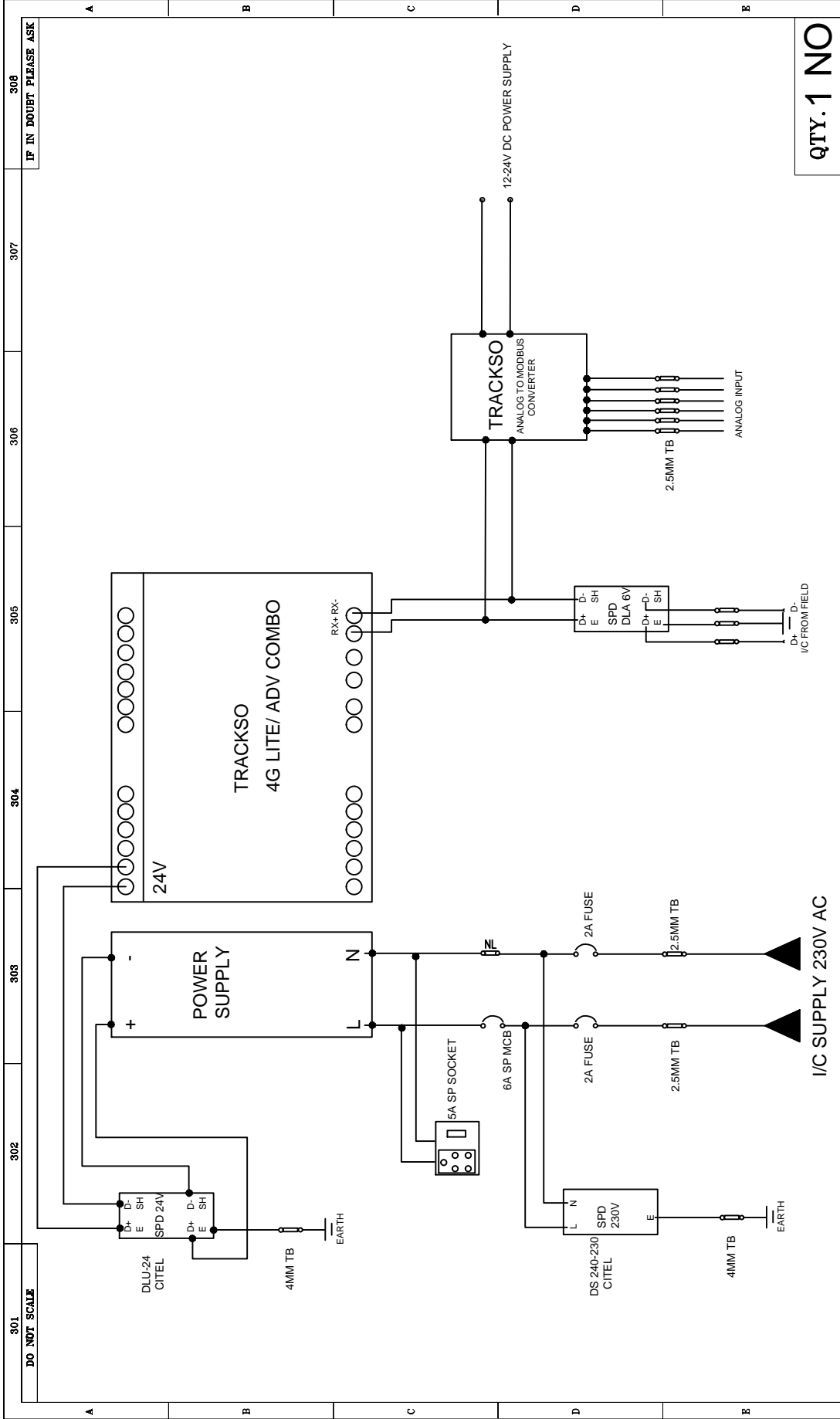
The protection devices shall be selected in accordance with the electrical loads at the site of installation. For inputs which are not protected via SPD in schematic diagram kindly refer to below sample model no.s

Note: Below links are purely for sample specification purpose

1. RS485 / RS422 – [Sample Model No.- Citel DLA-06D3](#)
2. RJ45 (Ethernet)- [Sample Model No.-MJ8-CAT6](#)
3. for RS485 or 0-5V Sensor – [Sample Model No.-Citel DLA-06D3](#)
4. for 4-20ma Sensor- [Sample Model No.-Citel DLA-24D3](#)
5. for 12V input power supply- [Sample Model No.-Citel DS220-12DC](#)
6. for 24V input power supply- [Sample Model No.-DS220-24DC](#)

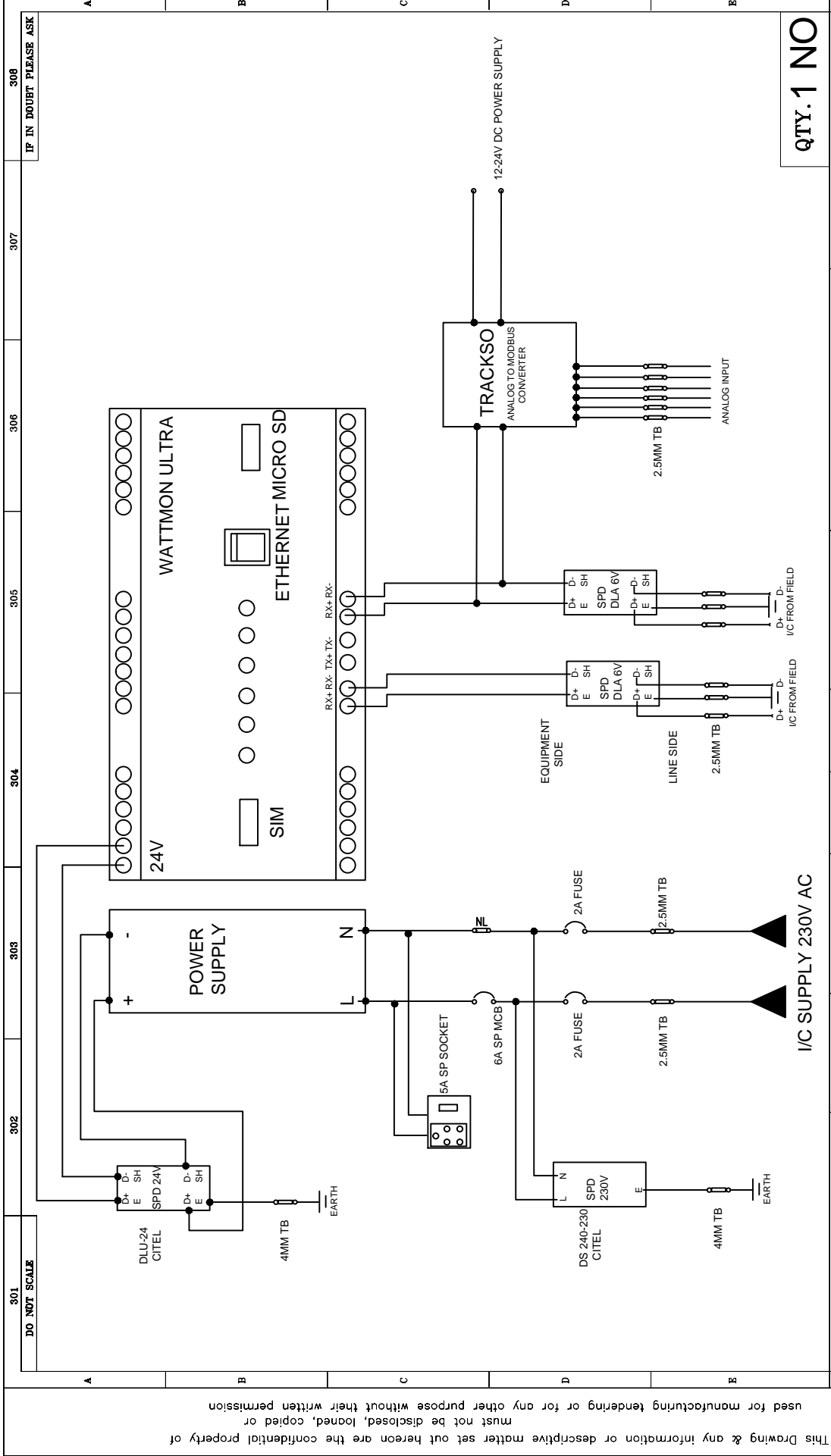
Warranty: None

This Drawing & any information or descriptive matter set out hereon are the confidential property of
 must not be disclosed, loaned, copied or
 used for manufacturing tendering or for any other purpose without their written permission



QTY. 1 NO

RECOMMENDED REAR ACCESS	NIL	CABLE ENTRY	OUTGOING	BOTTOM	PAINT SHADE	INSIDE/ OUTSIDE
RECOMMENDED FRONT ACCESS	600MM	DRWN. RAUSHAN	INCOMING	BOTTOM		MOUNTING PLATE
DRN.		CHKD.			TITLE: TRACKSO 4G LITE & ADV COMBO	
CKD.		APPRD.			CLIENT:-	
DATE		SCALE			PROJECT:-	
REV. 01		N.T.S.			ARCHITECTS:-	
					JOB No.	REV.
					DRG. No.	00
					SHEET NO.	1 OF 1

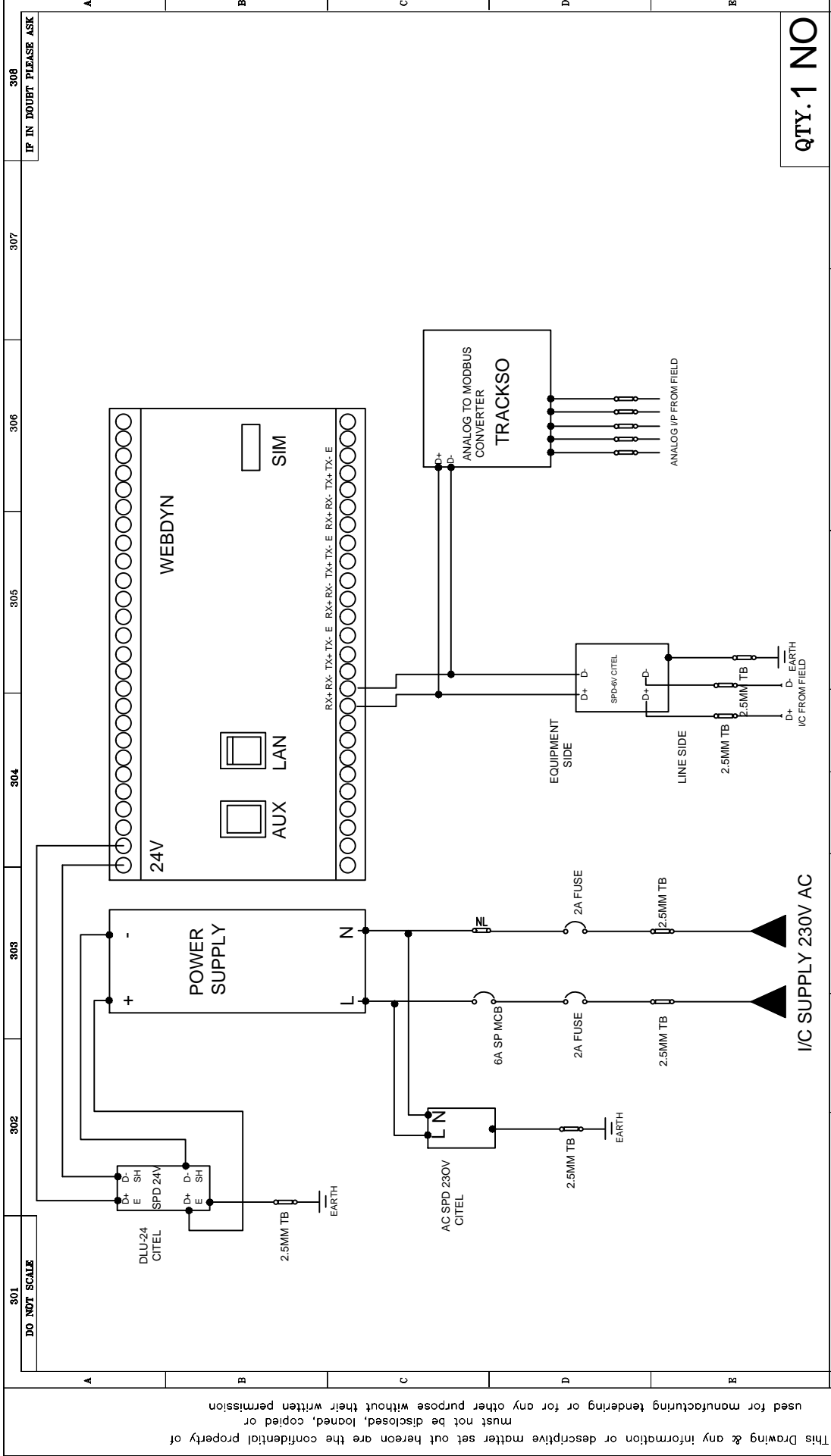


QTY. 1 NO

RECOMMENDED REAR ACCESS		NIL		CABLE ENTRY		OUTGOING		PAINT SHADE		INSIDE/ OUTSIDE	
RECOMMENDED FRONT ACCESS		600MM				BOTTOM		BOTTOM		MOUNTING PLATE	
DRN.										WATTMAN ULTRA-2 DATA SPD WITH N/A	
CKD.										TITLE:- ANALOG-MODBUS CONVERTER	
DATE										CLIENT:-	
REV.	01									PROJECT:-	
										ARCHITECTS:-	
										JOB No.	
										DRG. No.	
										SHEET NO. 1 OF 1	

This Drawing & any information or descriptive matter set out hereon are the confidential property of used for manufacturing tendering or for any other purpose without their written permission must not be disclosed, loaned, copied or

301 DO NOT SCALE 302 303 304 305 306 307 308 IF IN DOUBT PLEASE ASK



QTY. 1 NO

301		302		303		304		305		306		307		308	
IP IN DOUBT PLEASE ASK															
DO NOT SCALE															
RECOMMENDED REAR ACCESS		NIL		CABLE ENTRY		OUTGOING		PAINT SHADE		INSIDE/ OUTSIDE		MOUNTING PLATE			
RECOMMENDED FRONT ACCESS		600MM				BOTTOM		BOTTOM		N/A					
DRN.				DRWN.	RAUSHAN						TITLE:- SCHEMATIC DRG		JOB No.		REV.
CKD.				CHKD.							CLIENT:-		DRG. No.		00
DATE				APPRD.							PROJECT:-				
REV.	01			SCALE	N.T.S.		ARCHITECTS:-						SHEET NO. 1 OF 1		

This Drawing & any information or descriptive matter set out hereon are the confidential property of
 must not be disclosed, loaned, copied or
 used for manufacturing tendering or for any other purpose without their written permission